

What is the iBridgeSM Network Research Community Pilot?

In response to feedback from universities, researchers, and industry, the Research Community Pilot takes the cooperative aspect of the iBridgeSM Network to another level. The communities will gather innovations and related ideas for easier searches. Additionally, researchers and field experts can participate in online conversation and idea exchange, thus creating a community of interested parties.

By becoming a member of a research community, you can...

- Compare research projects and ideas.
- Collaborate on current projects and take them to the next step.
- Develop insight about new topics.

By joining a research community, innovation seekers and developers can focus on knowledge exchange. Such efforts may lead to new ideas that will carry research to the next level and bring people and ideas together that may otherwise not have found one-another.

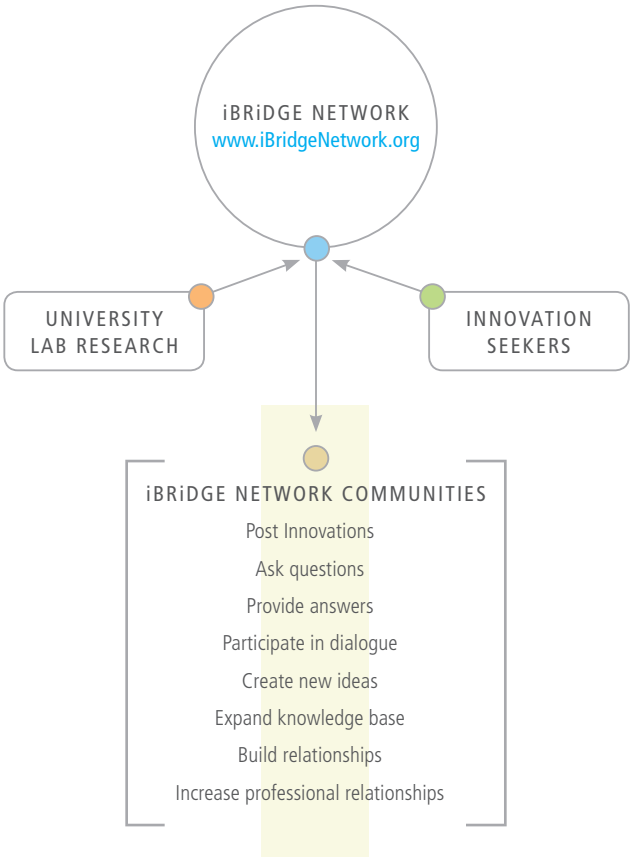
Is there a financial obligation?

Within the communities, there may be associated costs to access content from participating labs. Any revenues go directly to the affiliated lab. There is no fee to participate.

Getting linked with the iBridgeSM Network.

Visit the Web site, www.iBridgeNetwork.org, or, to learn more about the Pilot, contact pilot@iBridgeNetwork.org or **800.573.5136**.

How do the research communities work?



The content posted in the research communities will be copyright protected and owned by the entity posting the content, with access and use rights controlled by standard agreements available through the iBridge Web site. Because the focus of the research communities will be on sharing un-patented and/or early stage research, no licensing will take place within the on-line research communities. However, the research communities may foster relationships, collaborations and licensing opportunities outside of the online communities.